



**Legacy Rig 3**  
**Capacity 6,500' with 4-1/2" DP**

---

**DRAWWORKS**

Challenger 3T 360 475HP for 7/8" Line

**POWER**

(1) Detroit Series 12V71 475 HP

**TRANSMISSION**

Allison 5860 Automatic

**AUXILIARY BRAKE**

Trip Drum: WPT 224

Kelly Drum: WPT 224

**MAST**

Challenger 84' 200,000 SHL on 6 Lines

**SUBSTRUCTURE**

Challenger 9' 200,000 Set Back Capacity

**CATWALK**

16"H x 8"W x 50'L

**GENERATOR HOUSE**

(1) 350KW p/b (1) CAT 3408

(1) 300KW p/b (1) CAT 3406

Air Compressor: (1) Sullivan Screw 20HP

Air Compressor: (1) Quincy 350 (20HP)

**MUD PUMPS**

(2) Ideco 750 HP Duplex

**POWER**

(2) CAT 3406 E 480 HP Each

**TRANSMISSIONS**

Direct Drive

**TOP DRIVE**

Venturetech XK-150 150 Ton w/ HPU

p/b CAT C-9 375HP @ 2000RPM

**TRAVELING EQUIPMENT**

Swivel Blocks: McKissick 75 Ton (6) Lines

Trip Blocks: McKissick 100 Ton (6) Lines

**ROTARY ABLE**

Howard Turner 18" OB

**BOP EQUIPMENT**

DOUBLE:

ANNULAR: Regan 9" 2000PSI

Shaffer BOP Stack (avail. Upon Request)

**CHOKE MANIFOLD**

3" x 2" 3000 PSI

**CLOSING UNIT**

Koomey 4 Station 60 Gallon

**HOUSES & TANKS**

Top Doghouse 8'H x10'W x 25'L

Crew Change/Parts House NA

Diesel Fuel Tank (8,000 Gallon)

Water Tank (500 Bbl.) w/ 2-2"x3" Pumps

Pusher House NA

Crew Quarters NA

**MUD SYSTEM**

2 Tank - 560 Bbl. w/ 75 Bbl. Premix

**SOLIDS CONTROL EQUIPMENT**

Pumps: 2 - 5"x6" Centrifugal

Shaker: Derrick 3000 Single

Desander: NA

Desilter: OWI 8-4" Cones

Agitators: (4) 10HP

Mud House: 10'W x 20'L

Low Pressure System: Yes

**IRON ROUGHNECK**

NA

**AUXILIARY EQUIPMENT**

Wireline Machine: Mathey 7,000' Line

Deviation Recorder: N/A rented and released

Recorder: N/A rented and released

Pipe Spinner: Rauch 512 Hdy.

Air Hoist: NA

Hyd. Hoist: (2) OWI 6,000#

Hyd. HPU: N/A

**TUBULARS**

Drill Pipe: 4-1/2" 16.60# E&G

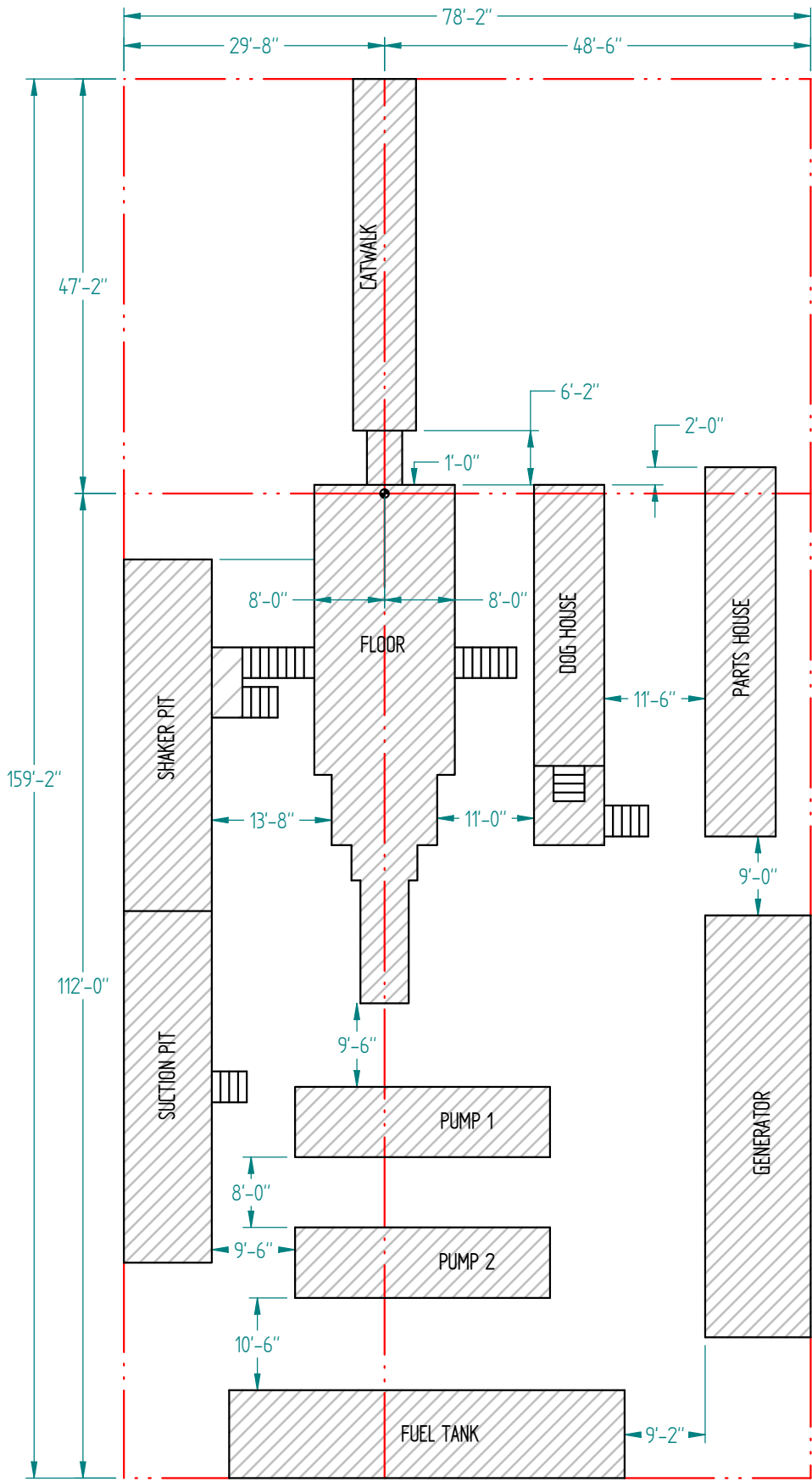
Drill Collars: 6-1/4" x 2-1/4" 92#

Drill Collars: 8" (Avail. Upon request)

Weight Pipe: 4-1/2" x 2-7/8" 42#

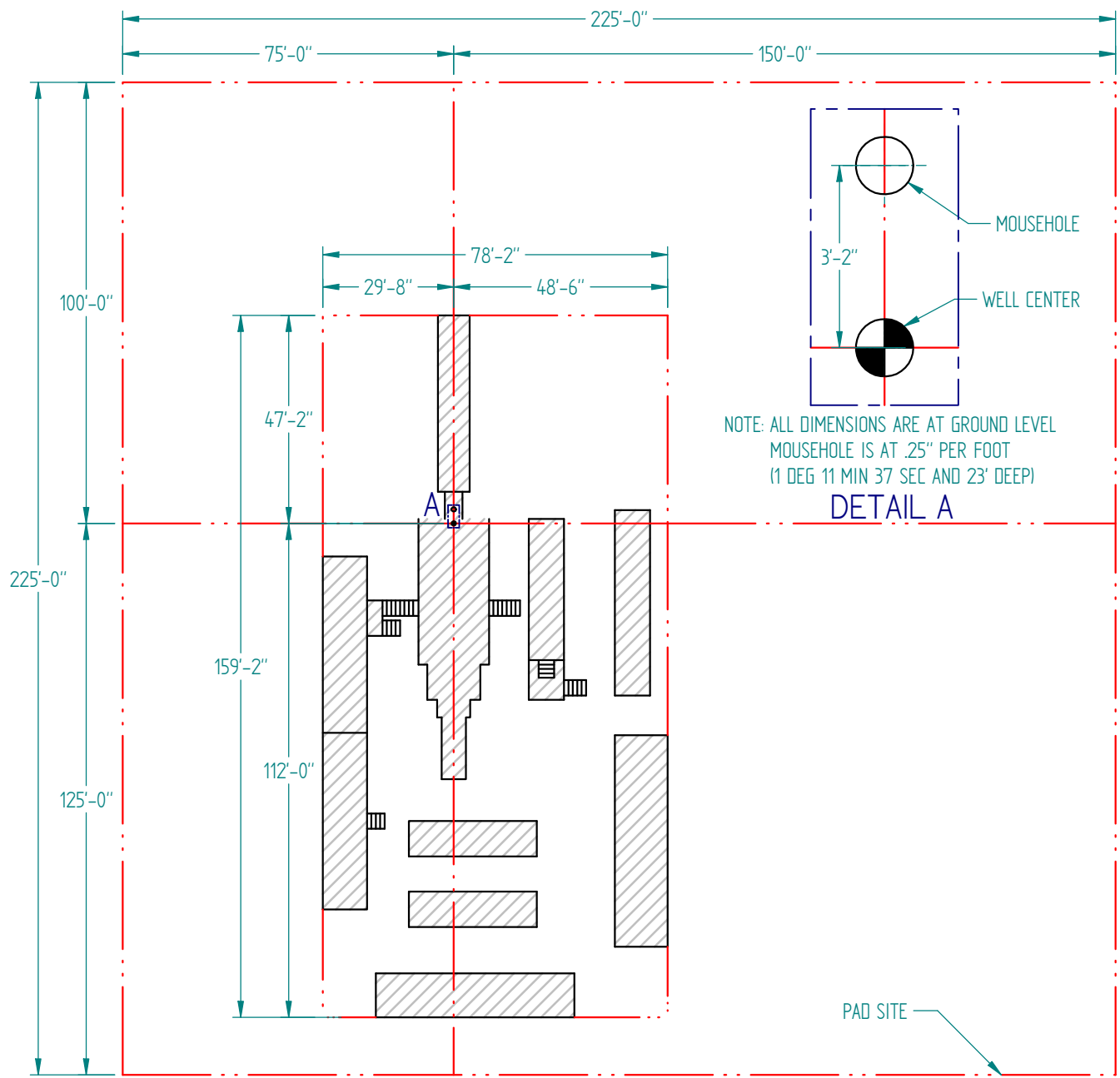
**FORKLIFT**

John Deere 544J



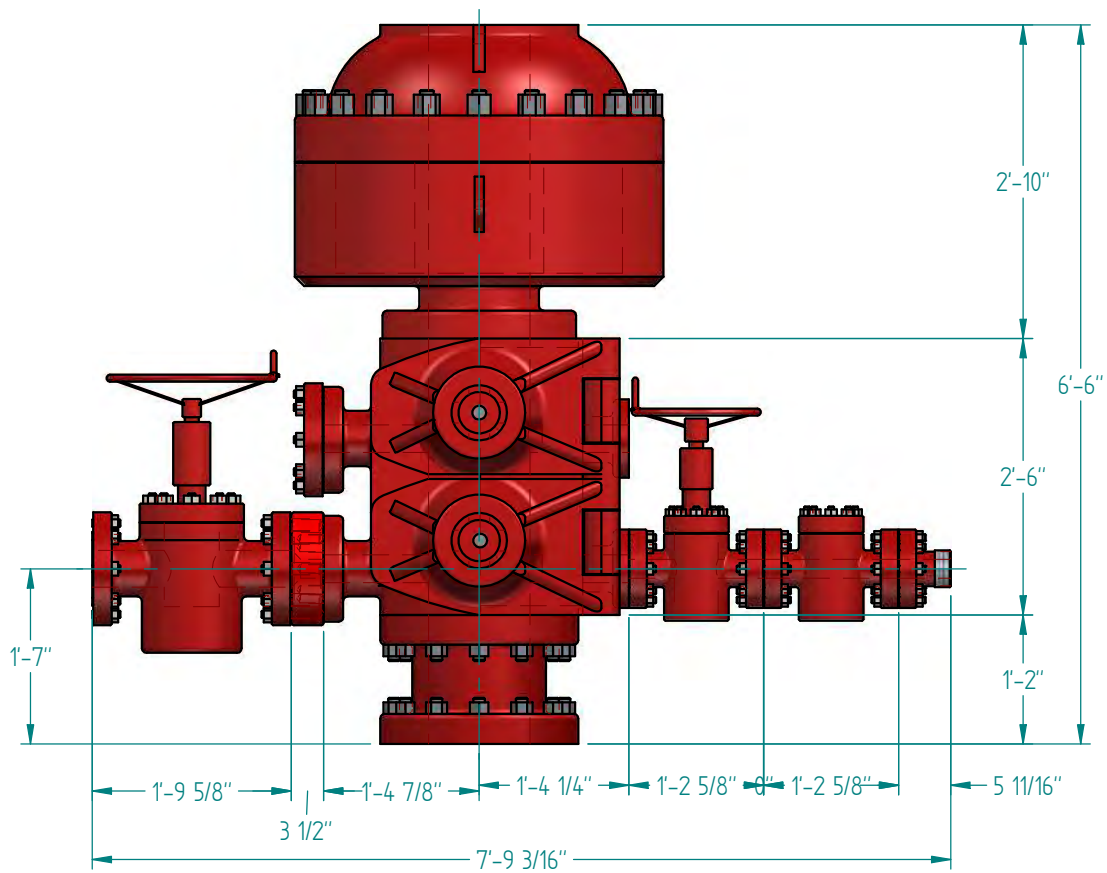
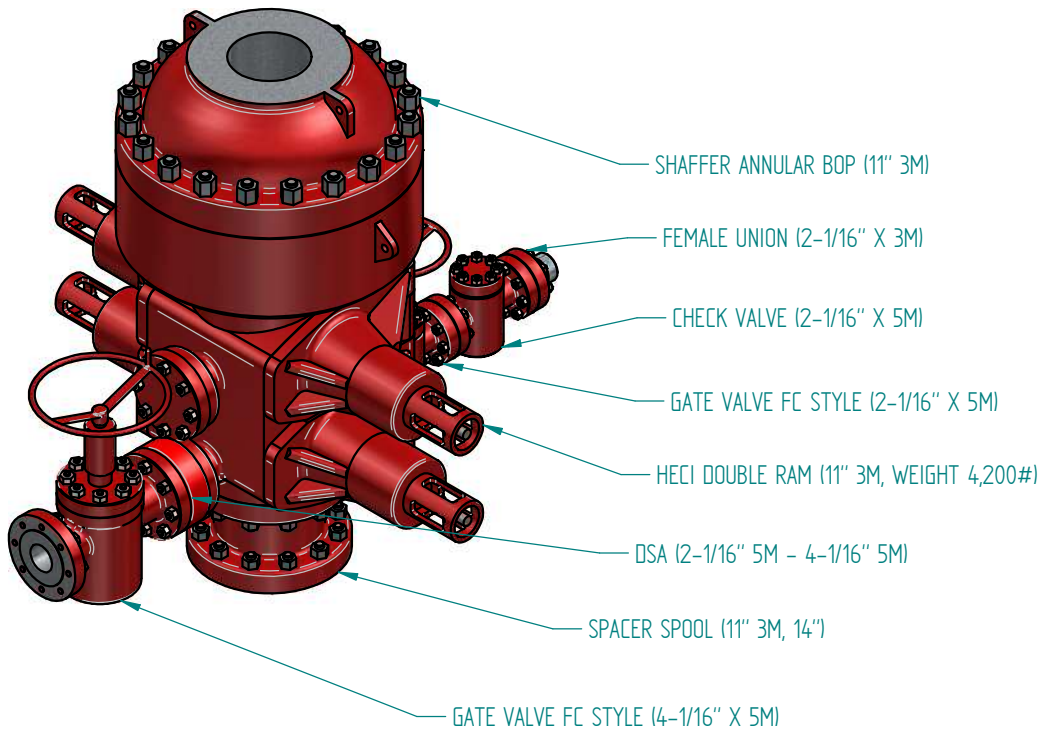
Rig 3





Rig 3





Rig 3

