



**Legacy Rig 18**  
**CAPACITY 13,500' with 4-1/2" DP**

---

**DRAWWORKS**

Skytop Brewster N-46 1000HP 1-1/8" Line

**POWER**

(2) CAT C-15 535HP Each

**TORQUE CONVERTORS**

(2) National C-195-100

**AUXILIARY BRAKE**

Parmac V-80

**MAST**

Braham 137'H x 20'W 550,000 SHL on 10-1-1/8" Lines  
2014 CAT III Inspection

**SUBSTRUCTURE**

Braham - 3 Box on Box 21'H x 22'W x 42'L  
2014 CAT III Inspection

**CATWALK**

18"H x 8'W x 50'L

**GENERATOR HOUSE**

(2) 455KW p/b (2) CAT 3456  
(2) Gardner/Denver 50H Screw 50 HP

**MUD PUMPS**

(2) RSF-1600 1600HP Each (New 2014)  
(2) 6" x 8" Charge Pumps 75HP Ea. (Skidded)

**POWER**

(2) CAT D-399 1300HP Each (Level 9 2014 -0- Hr. OH)

**TORQUE CONVERTORS**

(2) National C-300-100

**TOP DRIVE**

Tesco 250 HXI-700  
HPU p/b Cat C-18 960HP

**TRAVELING EQUIPMENT**

Block Hook: (2) S-Brewster 250 Ton Combo

**ROTARY TABLE**

Gardner-Denver: 22-1/2" x 53-1/4"

**BOP EQUIPMENT**

DOUBLE: Horn LWS 11" x 5000PSI  
ANNULAR: Horn LWS 11" x 5000PSI

**HOUSES & TANKS**

Top Doghouse 8'H x 10'W x 30L  
Crew Change/Parts House 8'H x 10'W x 40'L  
Diesel Fuel Tank (10,000 Gal.) 2-Pumps  
Water Tank (500 Bbl.) 2-Pumps  
Ameritech Pusher House 12'W x 48'L (skidded)  
Ameritech Crew Housing 13'W x 52'L (skidded)

**MUD SYSTEM**

2 Tank 1000 Bbl. w/ 125 Bbl. Premix

**SOLIDS CONTROL EQUIPMENT**

Pumps: w/ (4) 5"x6" Centrifugal  
Shakers: Vortex 3000 Duel (New)  
Desander: NA  
Desilter: OWI w/ 8-4" Cones  
Agitators: (4) 15HP Each  
Mud House: 10'W x 25'L  
Low Pressure Hooper: Yes

**IRON ROUGHNECK**

Blohm-Voss FH 70

**AUXILIARY EQUIPMENT**

Wireline Machine: Five Star  
Deviation Recorder: Rental MD Totco 20 Degree  
Recorder: Rental Pason EDR Base System  
Pipe Spinner: OWI 35C7 Air  
Air Hoist: Ingersoll-Rand K5  
Hyd. Hoist: Braden PD12  
Hyd. HPU: GFP w/ (2) Pumps  
Spool Skid:

**TUBULARS**

Drill Pipe: 5" 19.50# G-105 Double WB  
Drill Collars: 6-1/4" x 2-1/4" 92#  
Drill Collars: 8" (Avail. Upon Request)  
Weight Pipe: 4-1/2" x 2-7/8" 42#

**LOADERS**

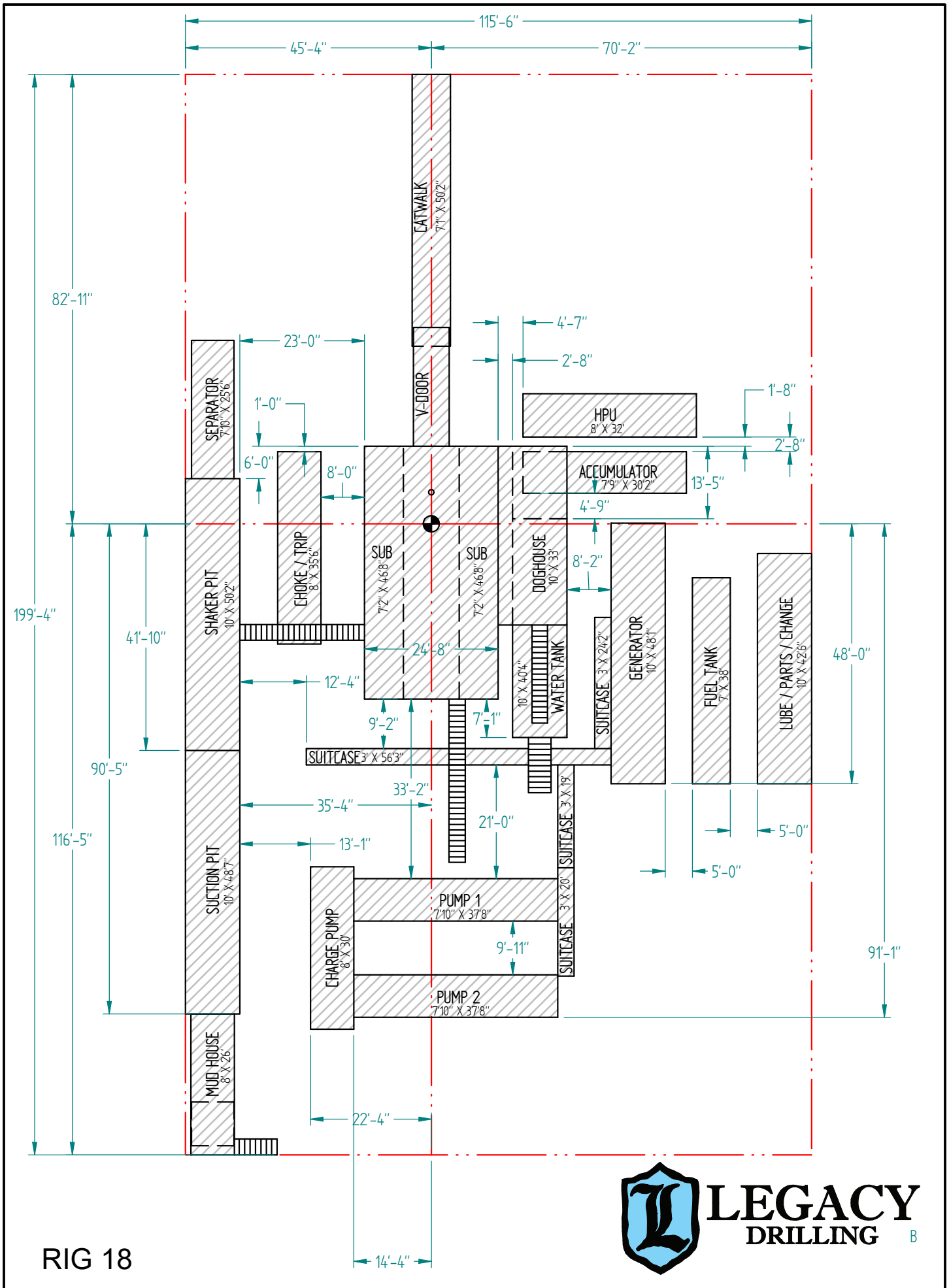
CAT TL 1255 Telehandler

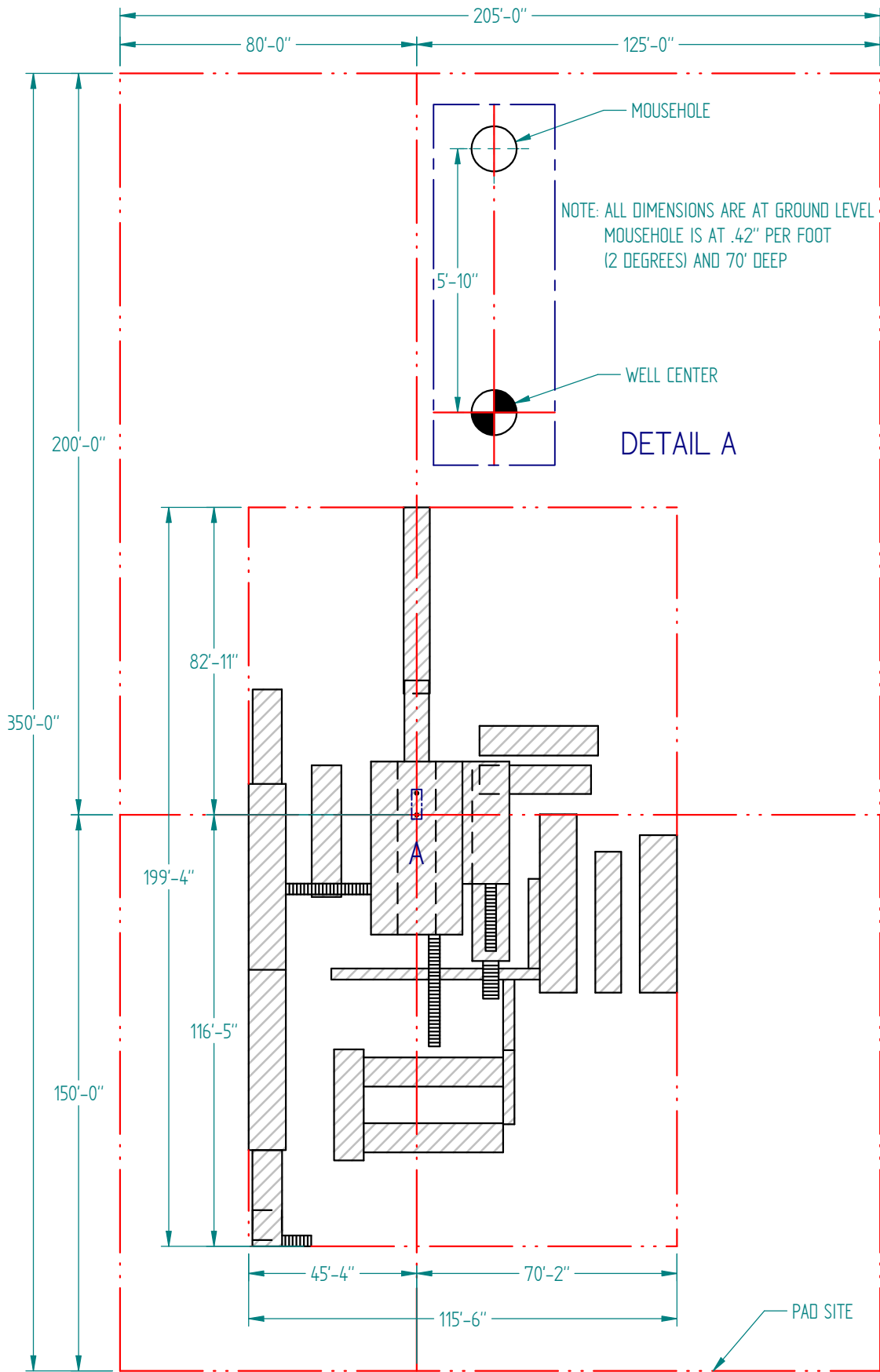
**CHOKE MANIFOLD**

Cameron 4" x 3" 5000PSI

**CLOSING UNIT**

Valcon 90-1B60 6 Station





Rig 18

