



Legacy Rig 17
CAPACITY 13,500' with 4-1/2" DP

DRAWWORKS

Skytop Brewster N-46 1000HP 1-1/4" Line

POWER

(2) Detroit Series 60 535HP Each

TORQUE CONVERTORS

(2) National C-195-100

AUXILIARY BRAKE

Parmac V-80

MAST

DSI 136' 450,000 SHL on 10-1-1/4" Lines

SUBSTRUCTURE

DSI 20' - 2 Box On Box 300,000 Setback

CATWALK

16"H x 8"W x 50'L

GENERATOR HOUSE

(2) 455KW p/b (2) Cummins QSX-15 Eng.

(1) Palatek 50D Screw 30HP

(1) Quincy 350 (On Compound)

MUD PUMPS

(2) F-1300

POWER

(2) CAT 399 Engines 1200HP Each

TORQUE CONVERTORS

(2) National C-300-100

TOP DRIVE

Venturetech XK -250 250 Ton w/ HPU

p/b CAT C-18 630HP

w/ Tesco Grabber Box f/ 3" Thru 8" TJ,s

TRAVELING EQUIPMENT

Block: Skytop Brewster 250 Ton

Hook: BJ 6250 250 Ton

ROTARY TABLE

Ideco 22-1/2"

BOP EQUIPMENT

DOUBLE: Shaffer LWS 11" x 5000PSI

ANULAR: Shaffer Spherical 11" x 5000PSI

HOUSES & TANKS

Top Doghouse 8'H x 10W x 30' L

Crew Change/Parts House 8'H x 10W x 40'L

Diesel Fuel Tank (10,000 Gallon)

Water Tank (500 Bbl.)

Ameritech Pusher House 12'W x 48'L (skidded)

Crew Housing: N/A

MUD SYSTEM

2 Tank - 850 Bbl. w/ 110 Bbl.

Premix

SOLIDS CONTROL EQUIPMENT

Pumps: w/ (4) 5"x6" Centrifugal

Shakers: Vortex 3000 Duel

Desander: N/A

Desilter: OWI w/ 8-4" Cones

Agitators: (4) 15 HP Each

Mud House: 10W x 30L

Low Pressure Hopper: Yes

IRON ROUGHNECK

Blohn-Voss FH 70

AUXILIARY EQUIPMENT

Wireline Machine: Five Star 15,000' Line

Deviation Recorder: Rental Gearheart 20 Degree

Recorder: Rental Pason EDR Base System

Pipe Spinner: OWI 35C7 Air

Air Hoist: Jolly JQHSB 5,000#

Hyd. Hoist: Braden PD12

Hyd. HPU: GFP w/ (2) Pumps

TUBULARS

Drill Pipe: 4-1/2" 16.60# G-105 Double WB

Drill Collars: 6-1/4" x 2-1/4" 92#

Drill Collars: 8" (Avail Upon Request)

Weight Pipe: 4-1/2" x 2-7/8" 42#

TELEHANDLE

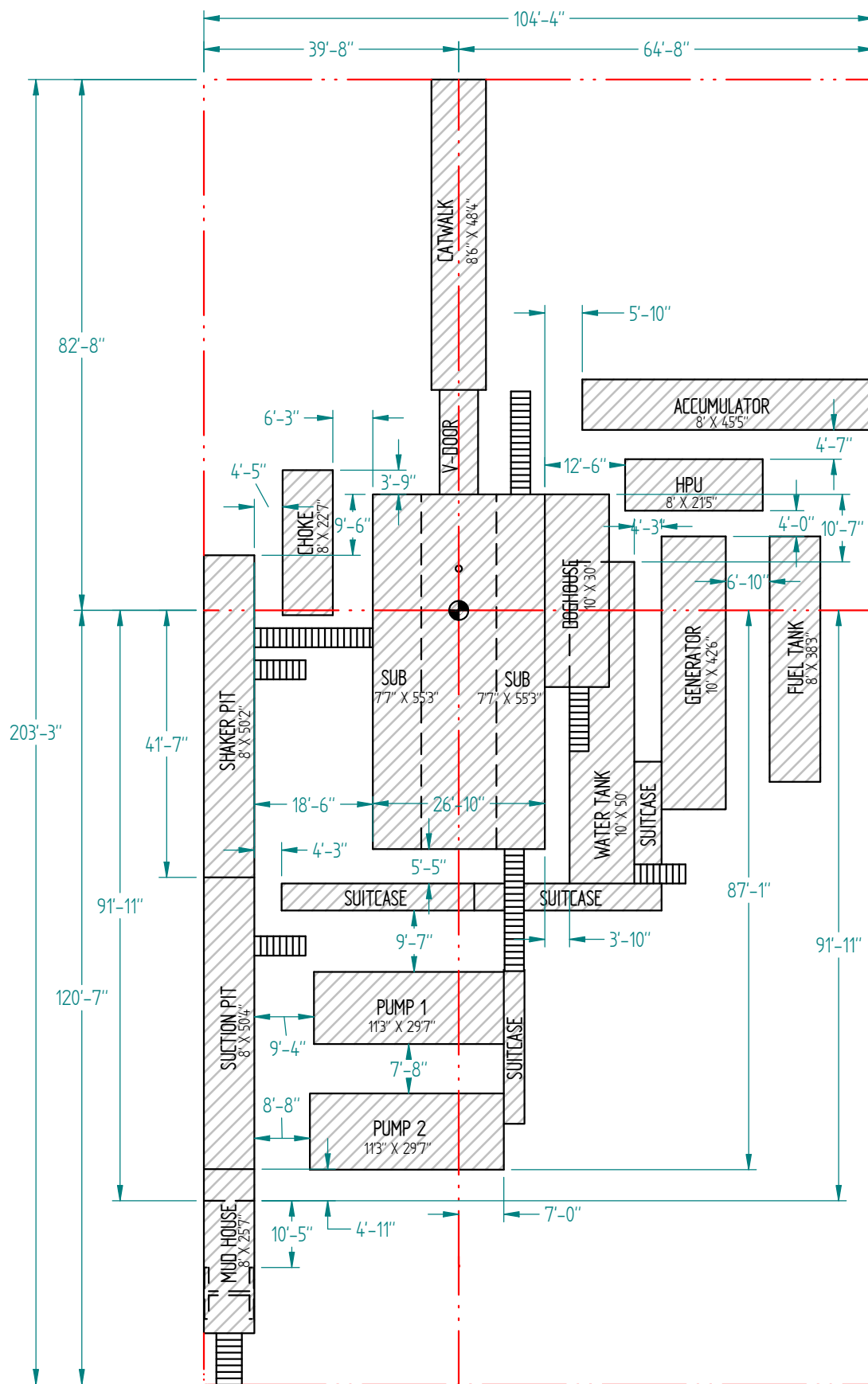
Telehandler or Forklift

CHOKE MANIFOLD

4" x 3" 5000 PSI

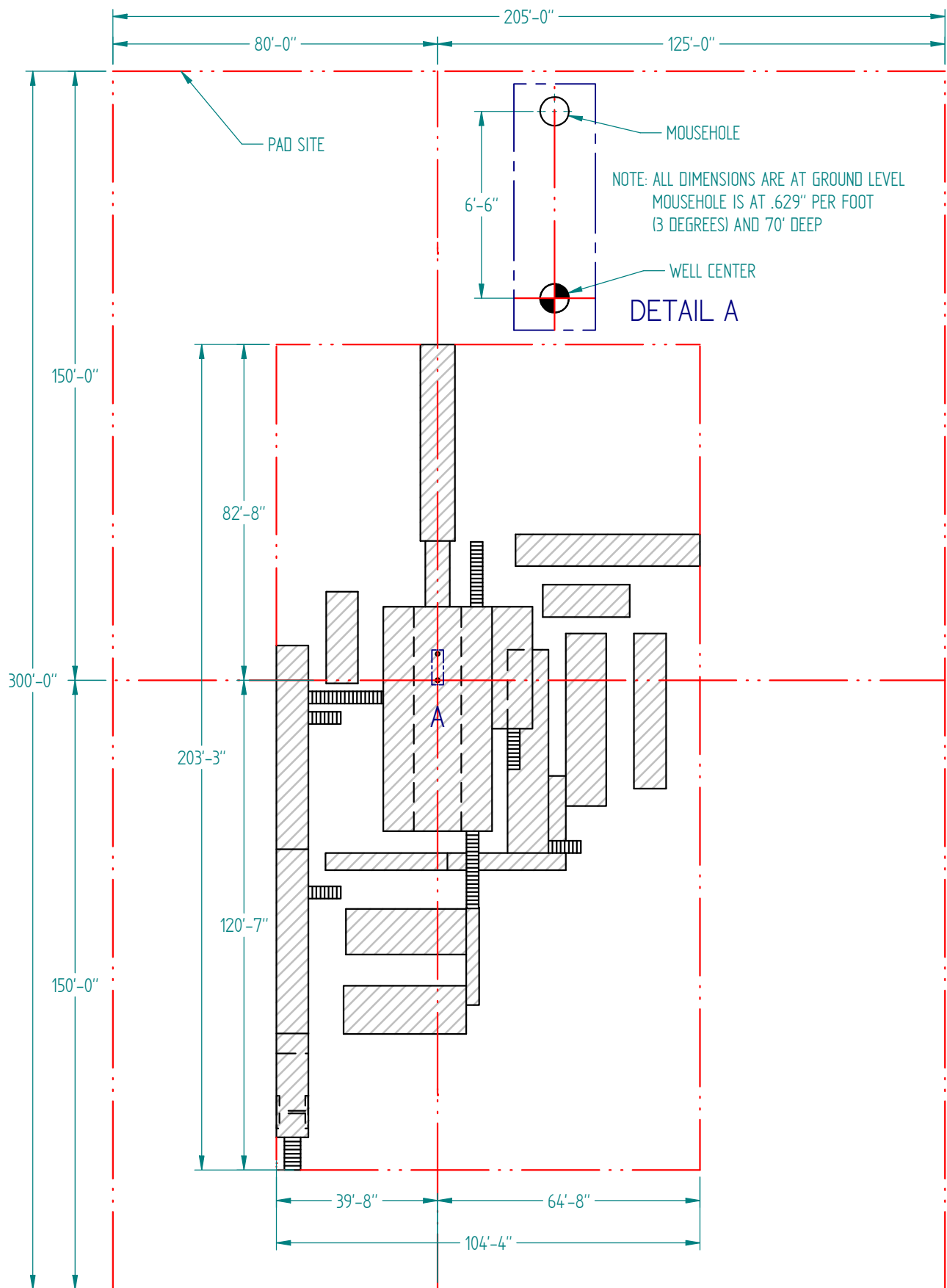
CLOSING UNIT

Valvcon 6 Station 180 Gallon



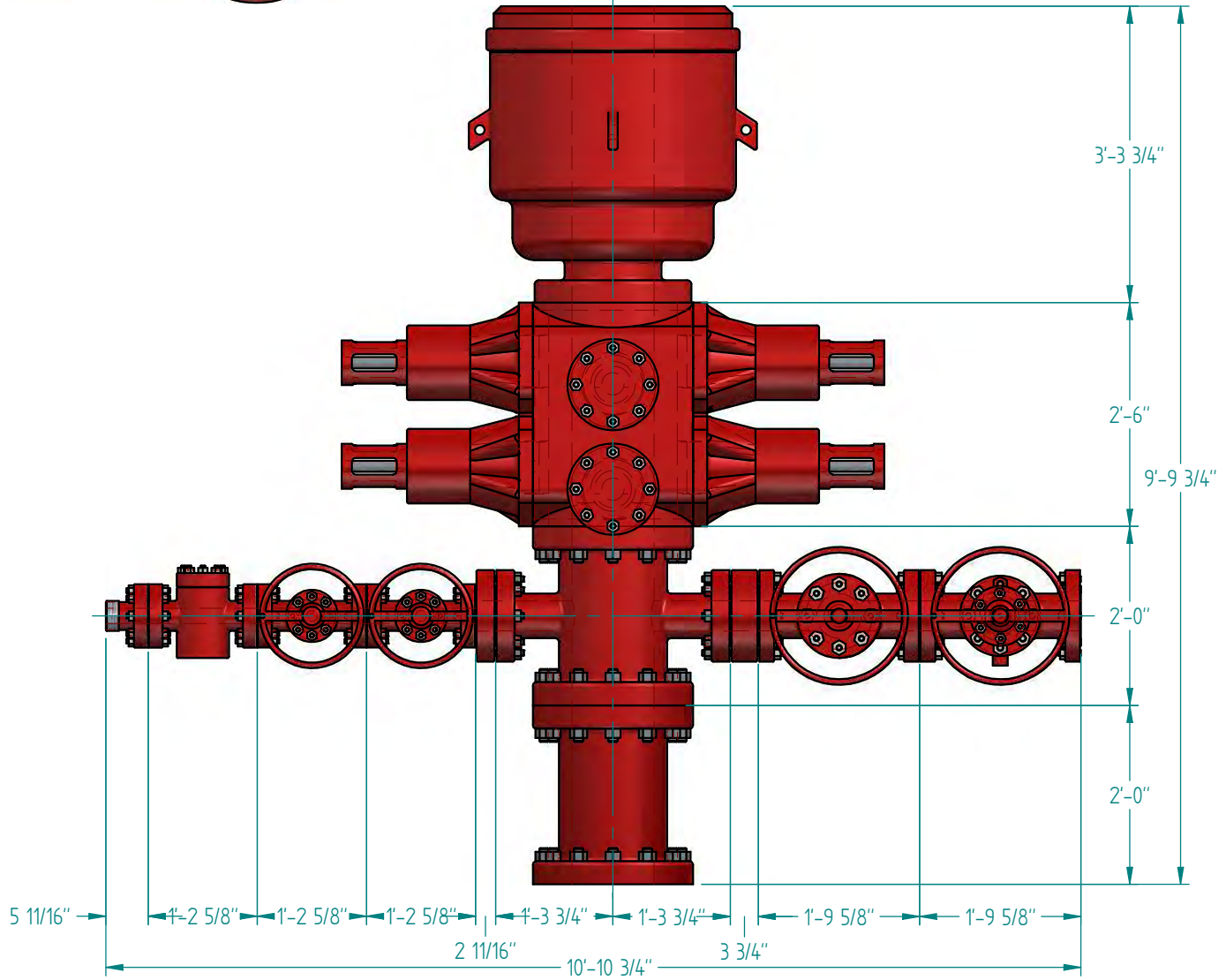
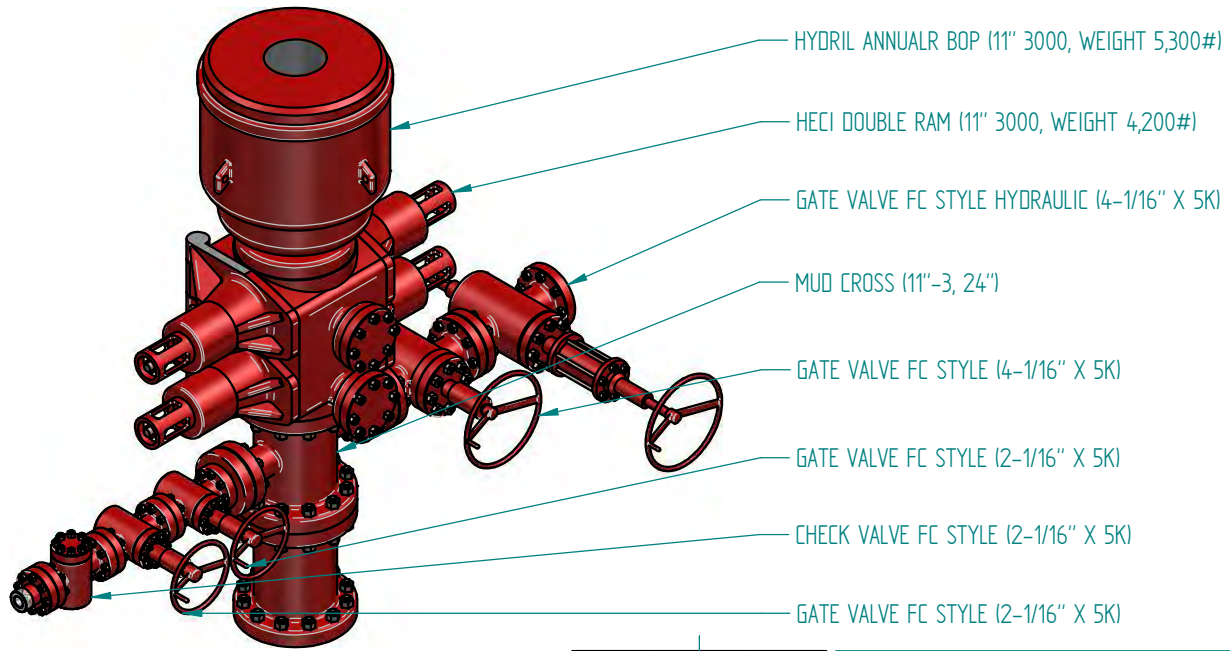
RIG 17





Rig 17





Rig 17

