



Legacy Rig 11
CAPACITY 11,000' with 4-1/2" DP

DRAWWORKS

Skytop Brewster N-42 650HP 1-1/8" Line

POWER

(2) CAT C-12 425HP Each

TORQUE CONVERTORS

(2) National C-195-80

AUXILIARY BRAKE

Parmac SR22

MAST

142' 350,000 SHL on 10 Lines

SUBSTRUCTURE

17' (2) Box on Box 350,000 Setback

CATWALK

16"H x 8"W x 50'L

GENERATOR HOUSE

(1) 455KW p/b (1) Cummings QSX-15

(1) 340KW p/b (1) CAT 3406

(1) Palatek 30D Screw 30HP

(1) Quincy 350

MUD PUMPS

(2) RS F-1000 1000HP Each

POWER

(2) CAT 3508C 960HP Each

TORQUE CONVERTORS

OWI C-300-80

TOP DRIVE

Venturetech XK-250 250 Ton w/ HPU

p/b CAT C-18 630HP

w/ Tesco Grabber Box f/ 3" Thru 8" TJ,s (Feb. 2015)

TRAVELING EQUIPMENT

Block: Brewster 250 Ton

Hook: web Wilson 250 Ton

ROTARY TABLE

Ideco 22-1/2"

BOP EQUIPMENT

DOUBLE: Shaffer LWS 11" 3000PSI

ANNULAR: Hydrill 11" 3000PSI

HOUSES & TANKS

Top Doghouse 8'H x 10'W x 30'L

Crew Change/ Parts House 10'W x 43'L

Diesel Fuel Tank (12,500 Gallon)

Water Tank (500 Bbl.) w/ 2-2"x3" Pumps

Ameritech Pusher House 12'W x 48'L (skidded)

Ameritech Crew Housing 13'W x 52'L (skidded)

MUD SYSTEM

2 Tank - 550 Bbl. w/ 80 Bbl. Premix

SOLIDS CONTROL EQUIPMENT

Pumps: (4) 5" x 6" Centrifugal

Shakers: Vortex 3000 Duel

Desander: NA

Desilter: OWI 8-4" Cones

Agitators: (5) 15HP

Mud House: 8'H x 8'W x 30'L

Low Pressure Hooper: Yes

IRON ROUGHNECK

Blohm-Voss FH 70

AUXILIARY EQUIPMENT

Wireline Machine: OWI 1600

Deviation Recorder: Rental Gearheart 20 Degree

Recorder: Rental Pason EDR Base System

Pipe Spinner: OWI 35C7 Air

Air Hoist: OWI 12,000#

Hyd. Hoist: OWI 12,000#

Hyd. HPU: GFP w/ 2 Pumps

TUBULARS

Drill Pipe: 4-1/2" 16.60# G-105 Double WB

Drill Collars: 6-1/4" x 2-1/4" 92#

Drill Collars: 8" (Avail. Upon request)

Weight Pipe: 4-1/2" x 2-7-8" 42#

FORKLIFT

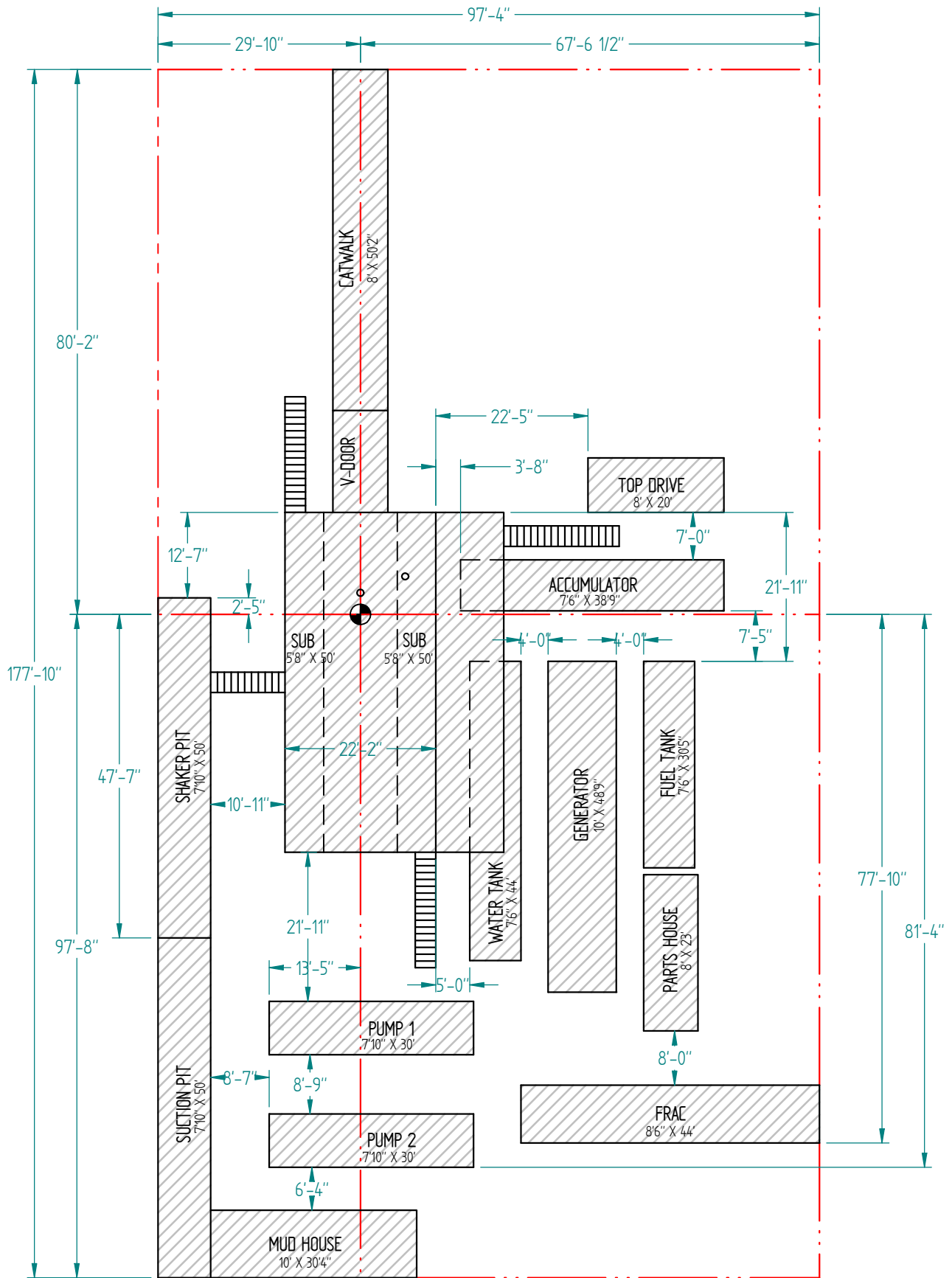
John Deere 624K

CHOKE MANIFOLD

4" x 2" 5000PSI

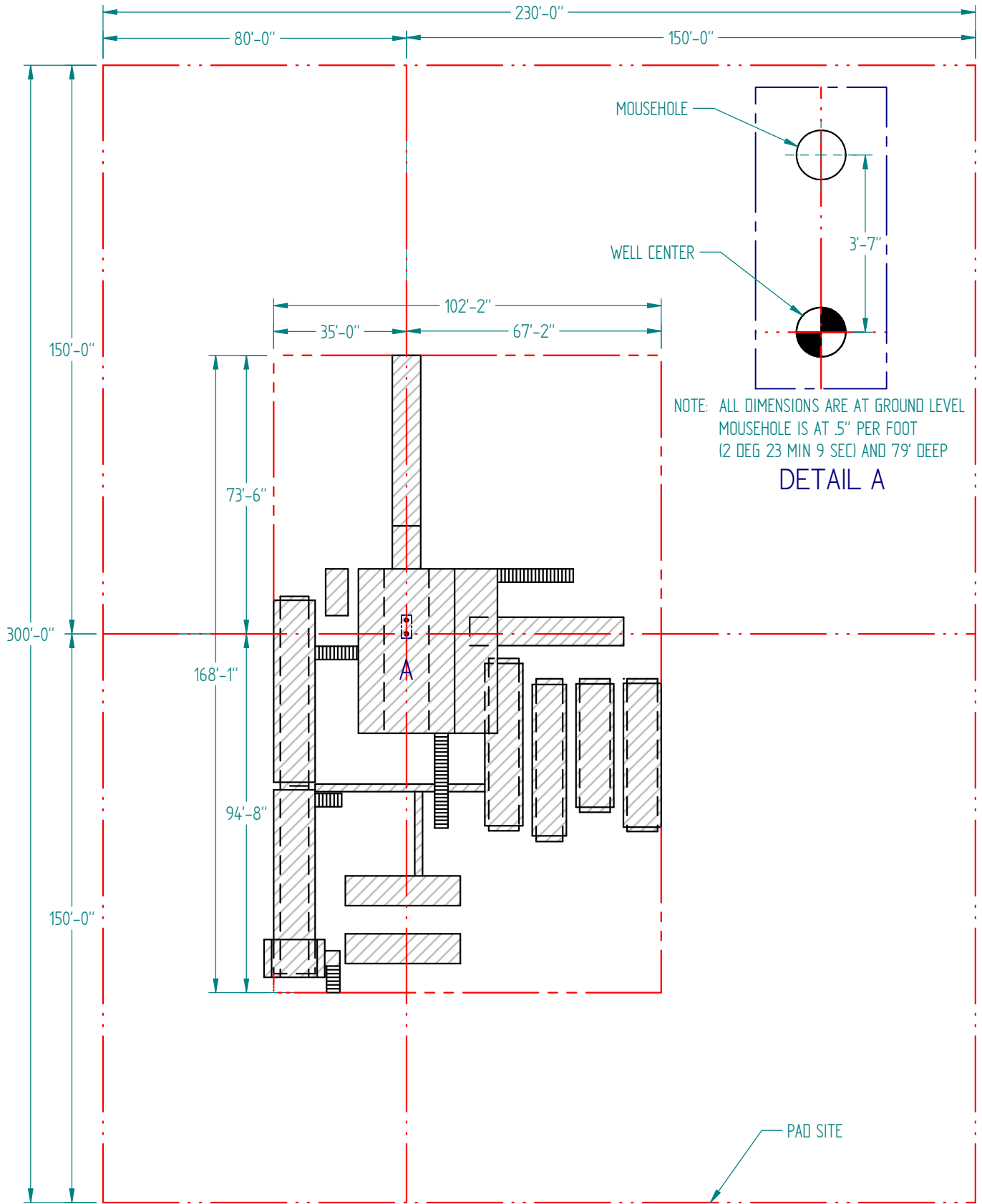
CLOSING UNIT

Koomey 5 Station 80 Gallon



RIG 11





Rig 11